

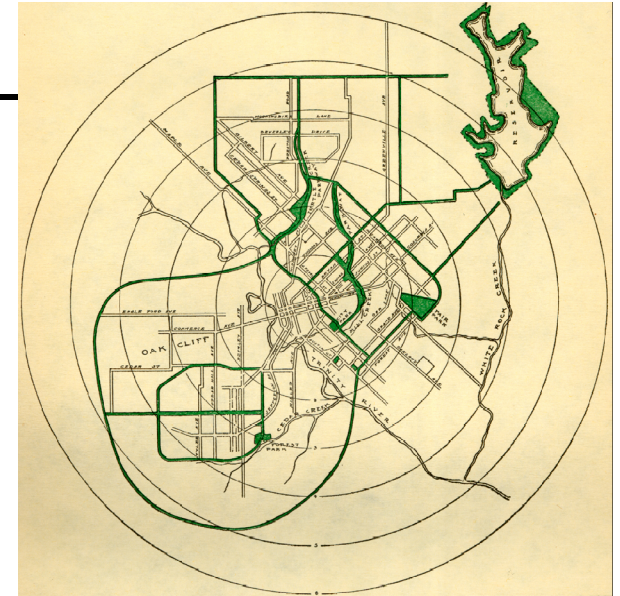
Can the Trinity anchor a regional open space system of national significance?

The thousands of acres that comprise the Trinity watershed as it passes through Fort Worth and Dallas constitute a potential environmental treasure virtually unparalleled in urban America. Comparable environments are such places as the 70 mile long Golden Gate National Recreational Area near San Francisco, and the 20,000 acre Metropolitan District Commission Reservations in eastern Massachusetts. This is the scale at which the entire Trinity enterprise should be considered, with the area encompassed by this plan serving as its heart. By comparison, Denver's South Platte River Park (see next page), as impressive as it is becoming, constitutes less than half of the acreage of the Trinity floodway.

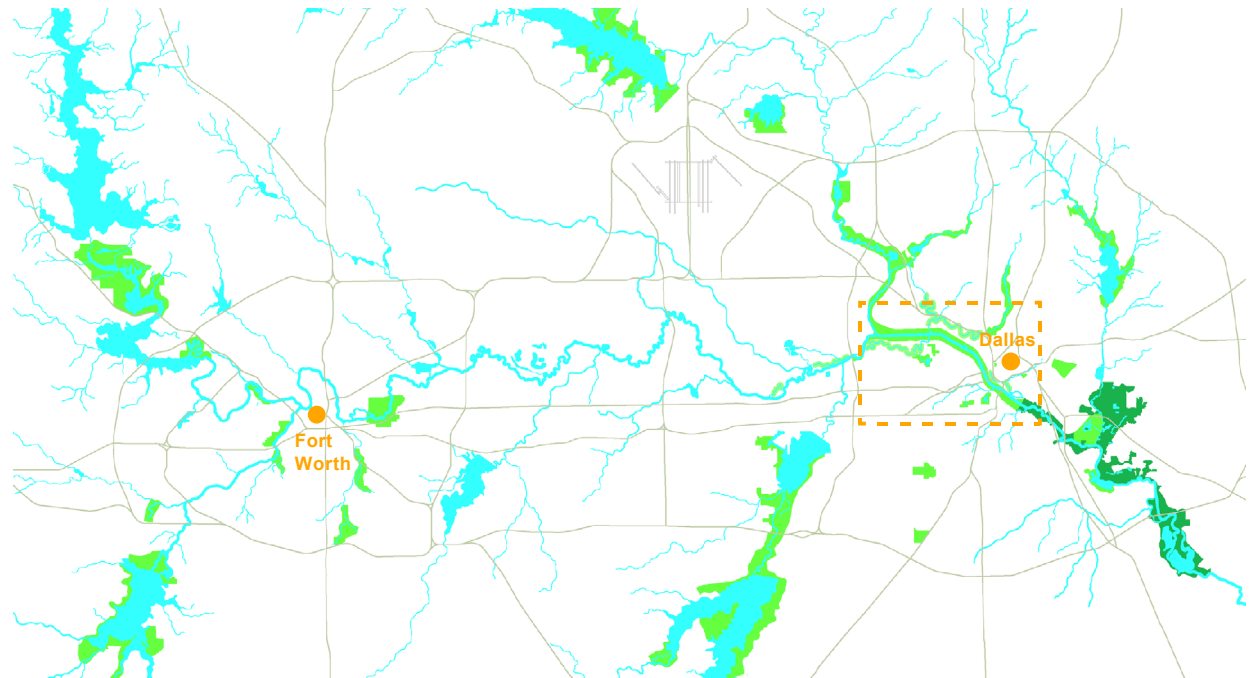


A kayak race on the Elm Fork.

The team developing this report strongly believes that the answer to each of these questions can be an emphatic 'yes' - if the vision for the Trinity River Corridor reflects an appropriate and creative balance among these features.



The 1911 Kessler Plan largely ignored the Trinity River as a regional open space resource.



The Trinity River connects the communities within the Dallas Metroplex.