

Update
for the
1998 Trinity Bond Program

March 2015

Overview

Trinity River Corridor Project addresses regional concerns but flood risk reduction is the cornerstone.

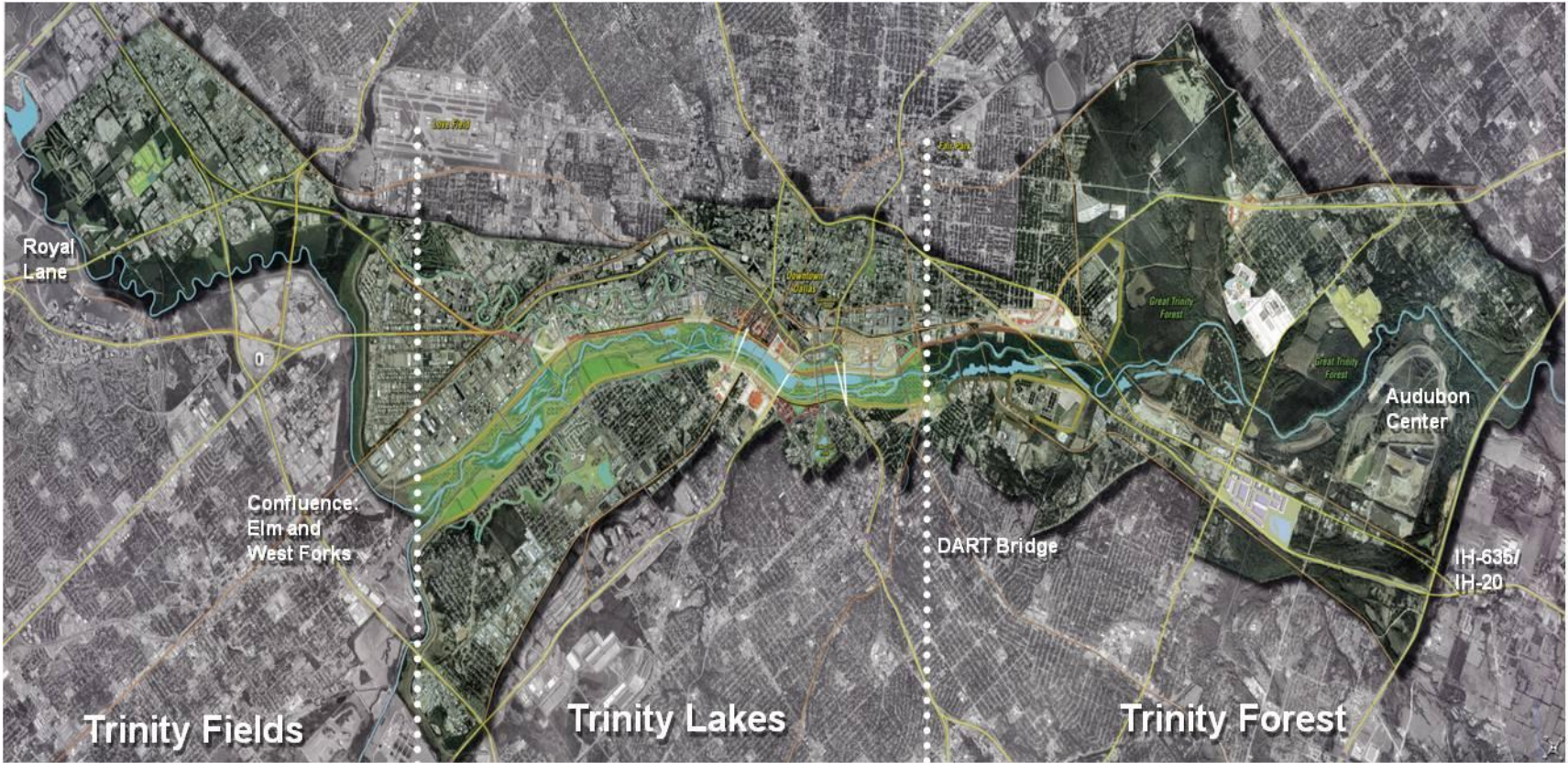
Five inter-related components of which flood control is primary

- Flood Control
- Ecosystem Restoration
- Transportation
- Recreation
- Economic Development



Implementation leads to the unification and sustainability of Dallas

Trinity River Corridor Geographic Areas



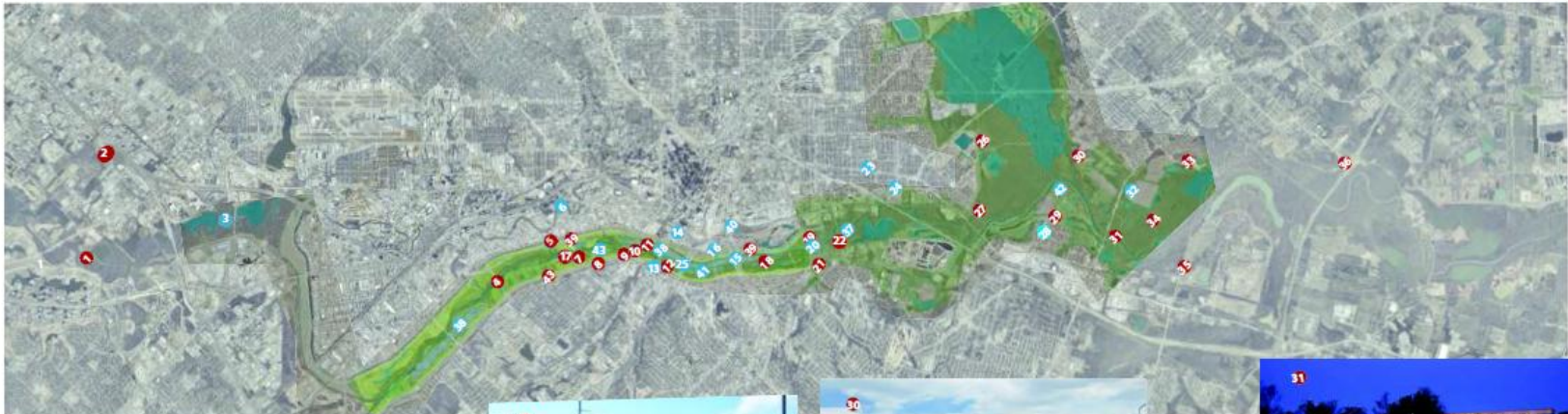
Status of the individual project components of the BVP

COMPLETED/SUBSTANTIALLY COMPLETE

1. California Crossing
2. MoneyGram Complex
4. Hampton Bridge
5. Baker Pump Station
6. Trinity Strand Trail Ph1
7. Sylvan Bridge
8. Pavaho Pump Station
9. West Dallas Gateway
10. Continental Bridge
11. Margaret Hunt Hill Bridge
12. Trinity Overlook
17. Sylvan Boat Launch
18. Trinity Skyline Trail Ph I
19. Santa Fe Trestle Trail
21. Moore Park Gateway
22. Cedar Crest Bridge & Gateway [2015]
25. 10K Levee-Top Trail
26. William Blair Jr. Park Trails
27. Buckeye Trail
29. Lower Chain of Wetlands
30. Texas Horse Park
31. Loop 12 Boat Launch
33. Trinity River Audubon Center
34. AT&T Trail
35. Trinity Forest Trails Phase I & II
36. Great Trinity Forest Gateway & Horse Trails
39. 100-year Levee Fix

IN - PROGRESS

3. Elm Fork Greenbelt Master Plan [2015]
13. Beckley/Commerce [2016]
14. Riverfront Blvd [2016]
15. Horseshoe/McDermott Bridge [2017]
16. Able Pump Station [2017]
20. Standing Wave [2012]
22. Cedar Crest Bridge & Gateway [2015]
23. SM Wright [2019]
24. South Lamar [2016]
28. Joppa Gateway [2015]
32. Trinity Forest Golf Course [2016]
37. Upper Chain Wetlands [2016]
38. Trinity Lakas Phase I [2016]
40. Cadiz Street [2015]
41. Trinity Skyline Trail Phase II [2015]
42. Trinity Forest/ Joppa Connector [2015]
43. Pavaho Wetlands [2015]



TRINITY RIVER CORRIDOR PROJECT [AS OF FEBRUARY 2015]

Trinity Fields/Elm Fork Greenbelt

Original Component	Current Component	Status
Elm Fork Levee (with Corps)	Elm Fork Drainage Improvements (without Corps)	Held in case needed for levee repairs; Recommendations to Council Spring 2015
Not Included	MoneyGram (Elm Fork) Soccer Complex	Complete
Not Included	Elm Fork Greenbelt Master Plan	Completes Spring 2015
Not Included	California Crossing Canoe Launch	Complete



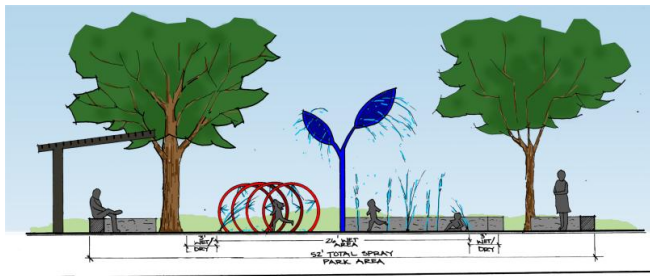
Trinity Forest

Original Component	Current Component	Status
Santa Fe Trestle Trail	Santa Fe Trestle Trail	Complete
Moore Park	Moore Park	Complete
Boat Ramp at Sylvan & Loop 12	Boat Ramp at Sylvan & Loop 12	Complete
Nature Center	Audubon Center	Complete
Horse Park	Texas Horse Park	Complete
MLK Gateway	MLK Gateway/Cedar Crest Bridge	Substantially Complete
Rochester Gateway	William Blair Jr. Gateway	Complete



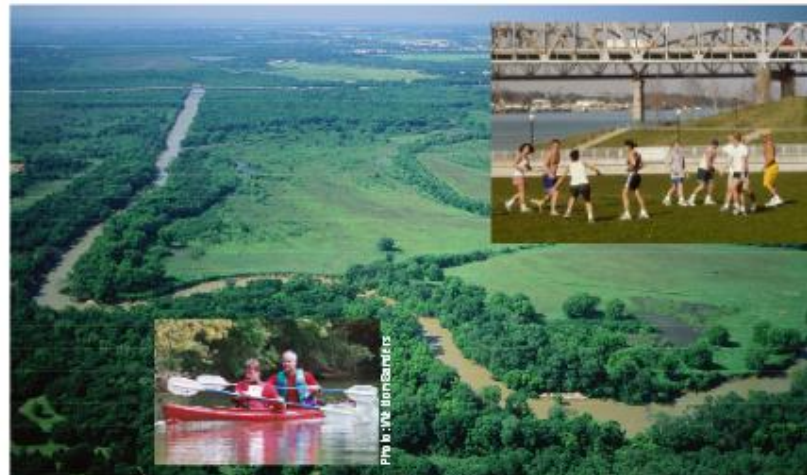
Trinity Forest

Original Component	Current Component	Status
I-20 Gateway	Great Trinity Forest Gateway and Horse Trails	Complete
Loop 12 Gateway	Loop 12 Gateway at Lower Chain of Wetlands	Open to Public; More improvements to be completed Spring 2015
Trinity Trails (Phase I & 2)	Buckeye Trail; Trinity Forest Trails (Phase I & 2)	Complete; Phase 3/AT&T Substantially Complete; Phase 4 Joppa Connection Completes late Spring 2015
Not Included	Trinity Golf Course	Under Construction
Not Included	South Central/Joppa Gateway Park	Under Construction



Trinity Planning

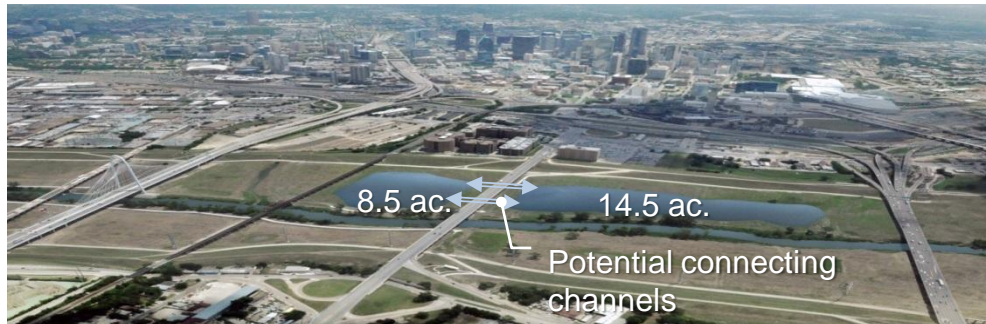
Original Component	Current Component	Status
Master Implementation Plan	Master Implementation Plan	Complete
Not Included	Trinity Comprehensive Land Use Plan	Complete
Not Included	Balanced Vision Plan	Complete
Not Included	Schematic Design of BVP, including design guidelines for Trinity Parkway	Complete



A range of activities . . . both programmed and "wild".

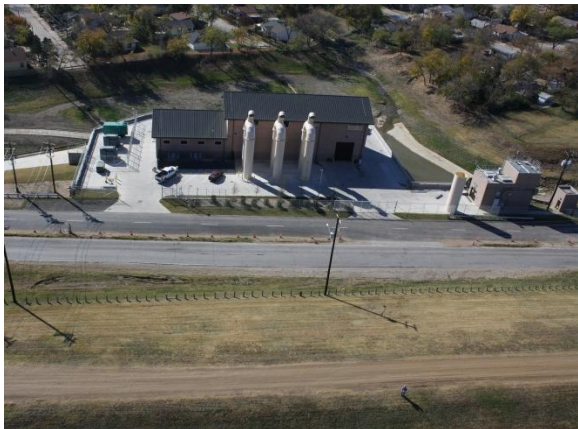
Flood Control

Original Component	Current Component	Status
Chain of Wetlands	<ol style="list-style-type: none"> 1. Lower Chain 2. Upper Chain 	<ol style="list-style-type: none"> 1. Complete 2. Under Construction
Lamar Levee	Lamar Levee	35% design complete; No federal funding
Cadillac Heights Levee	Cadillac Heights Levee	No Federal Funding
Not Included	Buyout of Cadillac Heights residential properties	Phase 1 - 95% Complete; Phase 2 - 50% Complete
First 33 Acre Lake in a Chain of Lakes (Eastside, Off Channel)	Phase I Lakes – 23 Acres (near Commerce) and 20 Acres West Dallas Lake (near Westmoreland)	Construction begins Spring 2015 pending EIS complete



Flood Control

Original Component	Current Component	Status
Not Included	Pavaho Pump Station	Complete
Not Included	Baker Pump Station	Substantially Complete
Not Included	Able Pump Station	Under Construction
Not Included	100-Year Levee Fixes	Complete
Not Included	Hampton, Charlie, Trinity Portland Pump Stations & Delta (rehab)	35% Design Complete; Future Funding Required



Transportation

Original Component	Current Component	Status
Woodall Rodgers Bridge	Margaret Hunt Hill Bridge	Complete
Beckley/Commerce Intersection	Beckley/Commerce Intersection	Construction begins Spring 2015
Split Trinity Parkway as a Toll Toad	<ol style="list-style-type: none"> 1. Combined Trinity Parkway as Toll Road 2. SM Wright/ Trinity Phase I 	<ol style="list-style-type: none"> 1. Pending EIS and Funding 2. Awarded for Construction (SM Wright)
Not Included	Sylvan Bridge replacement	Substantial Completion
Not Included	I30/I35 Bridges – Margaret McDermott Bridge	Under Construction



Transportation

Original Component	Current Component	Status
Not Included	South Lamar	Award Construction Spring 2015
Not Included	Riverfront Phase I/ Continental	Under Construction
Not Included	Riverfront Phase II	Under Design
Not Included	Cadiz	Under Construction
Not Included	Canada Drive from Westmoreland to Hampton	Under Design
Not Included	Morris Street	Under Construction



Other Added Elements

Original Component	Current Component	Status
Not Included	Standing Wave	Open – awaiting study of adjustments
Not Included	Pavaho Wetlands	Construction completes Spring 2015
Not Included	Commerce Overlook	Complete
Not Included	Trinity Skyline Trail	Phase I Completed; Phase 2 Under Design; Phase 3 funding recently approved through TAPS grants (Sylvan to Irving)
Not Included	Continental Bridge and West Dallas Gateway	Complete



Other Added Elements

Original Component	Current Component	Status
Not Included	Bellview Connector	Feasibility Study Complete
Not Included	Big Spring	Historic Designation and Conservation Planning Underway
Not Included	Undergrounding of Oncor's 345 KVA line	Complete
Not Included	Trinity Strand Trail	Phase I Complete; Phase II Funded



Funding (amount/expenditures)

- Total City Expenditures and Encumbrances \$ 464.6 Million
- % of all Trinity Related Bond Program Funds Expended or Encumbered 84%
- Private Funding Donated to Date \$60 Million

Activities/Involvement

- Number of Visitors to Continental Bridge/West Dallas Gateway (mid-June through end of 2014) 72,250
- Amount of tires removed from Trinity River Over 198 Tons
- # of Corporate/Private and Non-Profit Partners 37
- # of Volunteers for Cleanups (2014) 6,000
- Pumping Capacity Added 990K Gallons Per Minute
- Trails Added 39.7 miles